

# THE Trondheim KRISTIANSTEN FLOOR PLAN



1,901



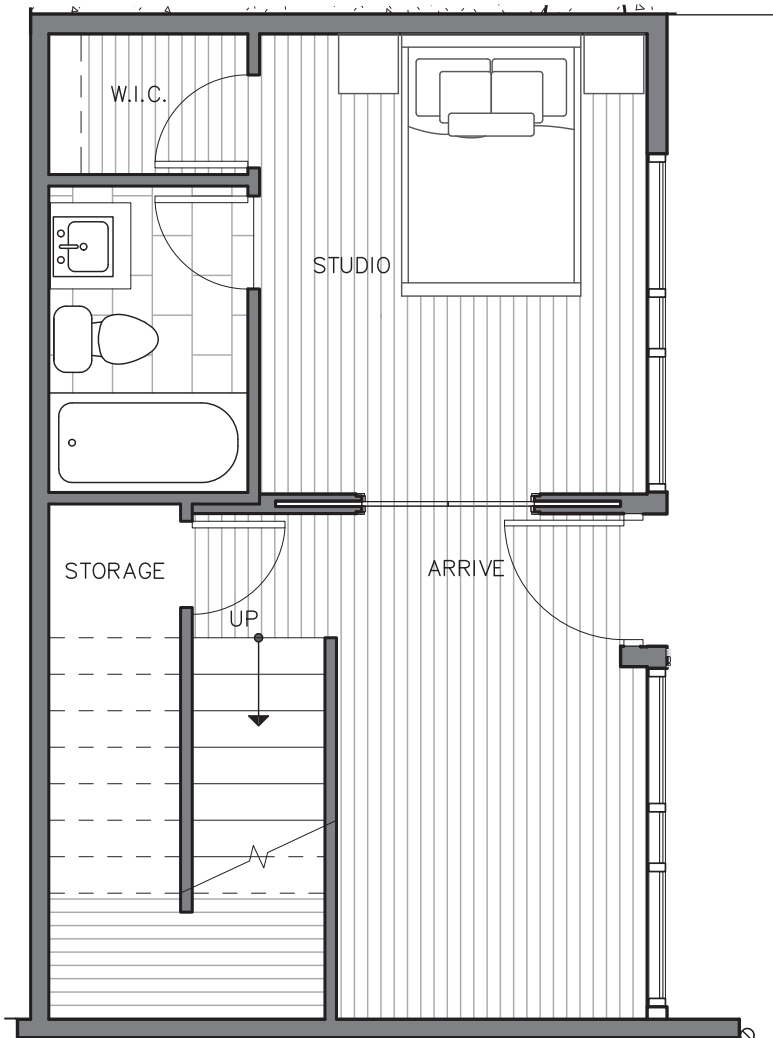
3



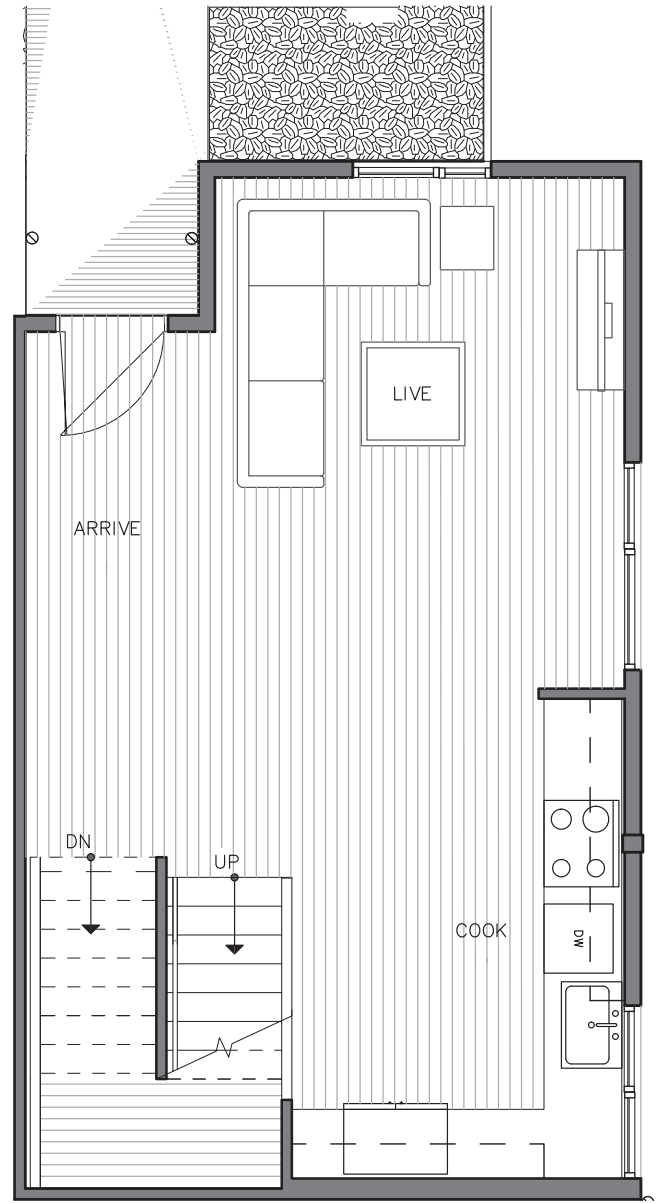
2.75



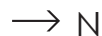
GARAGE SPACE



FIRST FLOOR



SECOND FLOOR



PID: 476

# THE Trondheim KRISTIANSTEN FLOOR PLAN



1,901



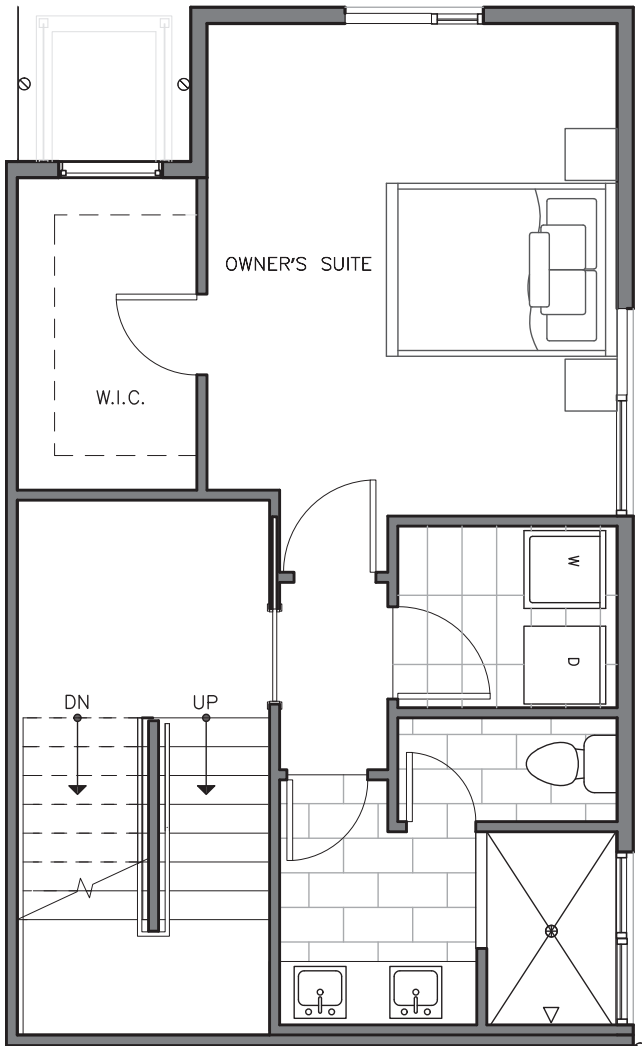
3



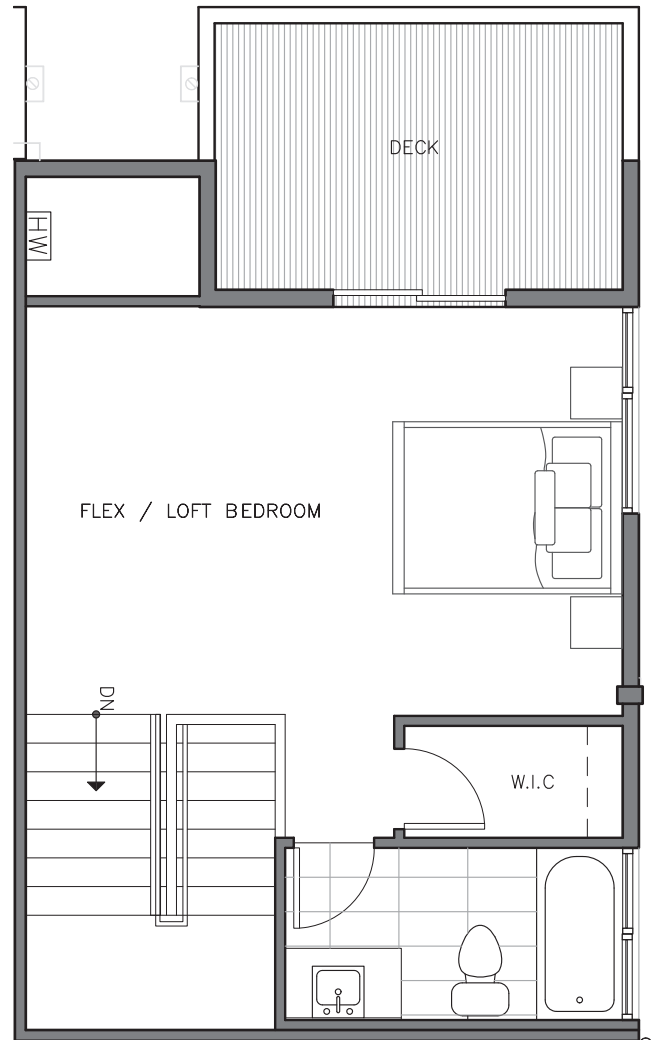
2.75



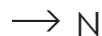
GARAGE SPACE



THIRD FLOOR



FOURTH FLOOR



PID: 476